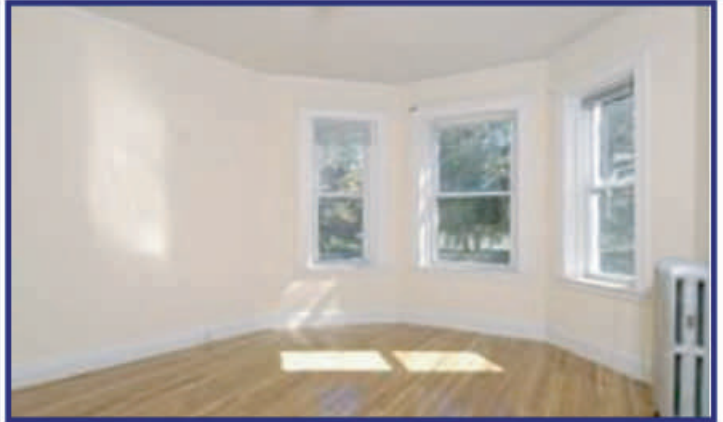


## 131 Park Drive #1, Boston MA 02215

\$349,000.00/684 square feet/269 condo fee/\$1362 2005 taxes



This rare front facing two bedroom parlor level features an open living and dining combination with a triple bow window overlooking the Fenway with recently refinished original hardwood floors and freshly painted throughout located on one of the Fenway's most coveted tree-lined streets in this well maintained Victorian Townhouse all within a 1-30 minute walking distance to Restaurant Row, Back Bay, Prudential, Financial District, BU Medical, MGH, Tufts Medical, NU, Suffolk U, New England, Harvard, MIT and the MBTA.

# [www.RichHaen.com](http://www.RichHaen.com)

Virtual Tours - Still Images - Sales History

[Rich@RichHaen.com](mailto:Rich@RichHaen.com) or 617-796-5651

RE/MAX Old South Real Estate - 631 Tremont Street, Boston, MA 02118

Office: 617-536-3330 - Fax: 617-536-3332 - [Rich@RichHaen.com](mailto:Rich@RichHaen.com) - [www.RichHaen.com](http://www.RichHaen.com)



Each Office Independently Owned and Operated

